



- White
- Silver
- Gray
- Black

**STS-7**

# Recessed Double-Sided Flip-up Desk Outlet



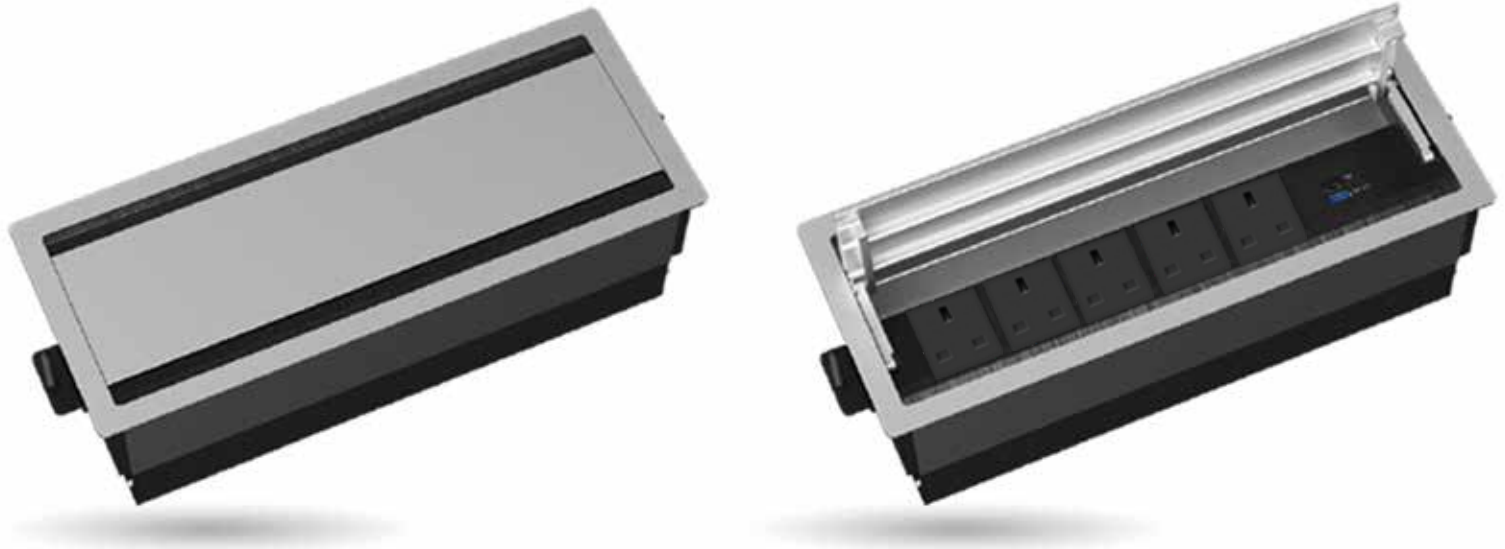
[WWW.DOUBLE-A.NET](http://WWW.DOUBLE-A.NET)

More information call us +966 552394290

# STS-7-6F

## Recessed Double-Sided Flip-up Desk Outlet

### ■ SPECIFICATIONS :

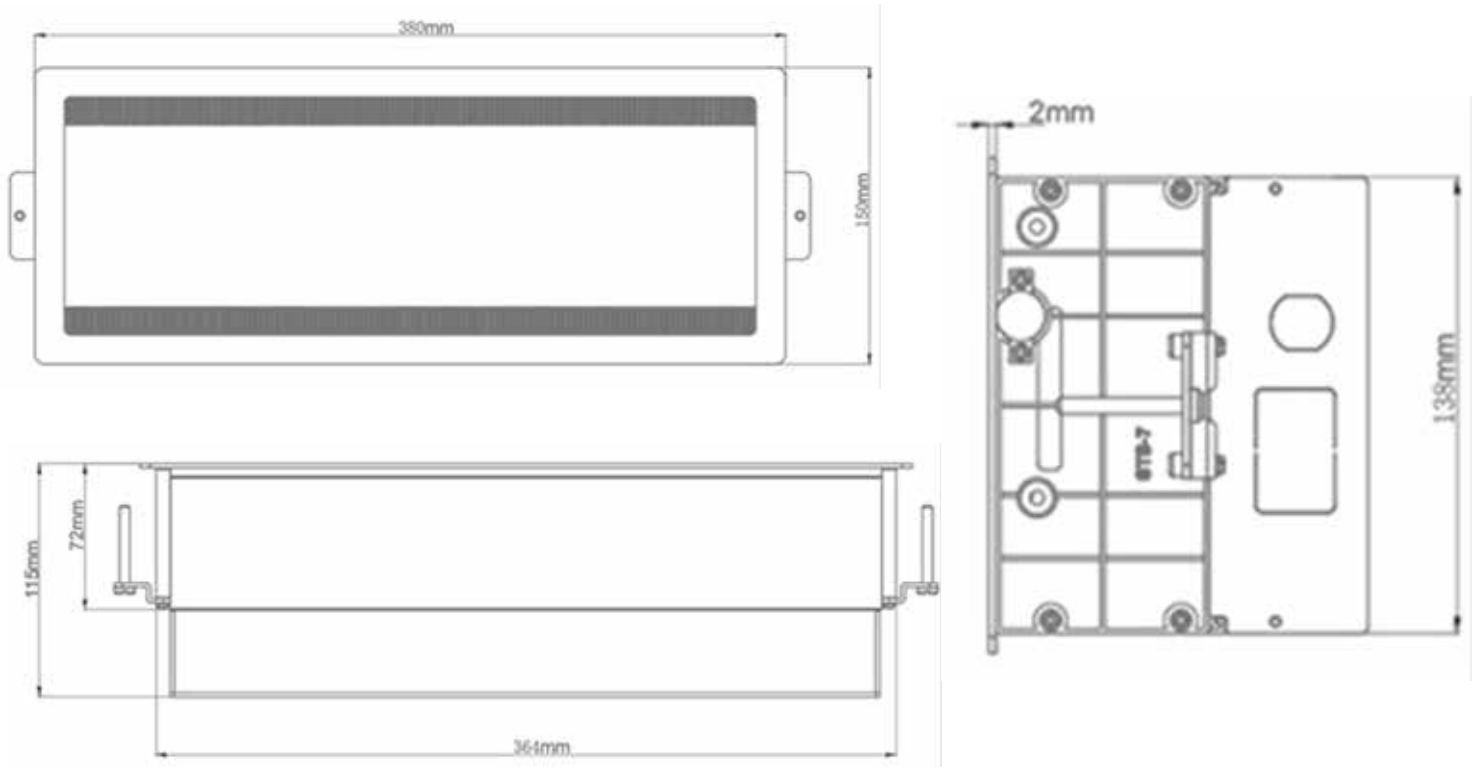


<b>Model No :</b>	<b>STS-7S/6F</b>	<b>STS-7B/6F</b>	<b>STS-7W/6F</b>	<b>STS-7GY/6F</b>
<b>Color :</b>	Silver	Black	White	Gray
<b>Material :</b>	PVC ( Base Box and Socket Card frame ) Aluminum alloy ( Product Housing )			
<b>Version :</b>	6 Way			
<b>Module Capacity :</b>	12 Module			
<b>Cutout ( mm ) :</b>	366× 140			
<b>Ideal for :</b>	Office Spaces, Conferenc Rooms, Educational Institution, Hospitality Environments, Co-working Spaces and Home Offices			

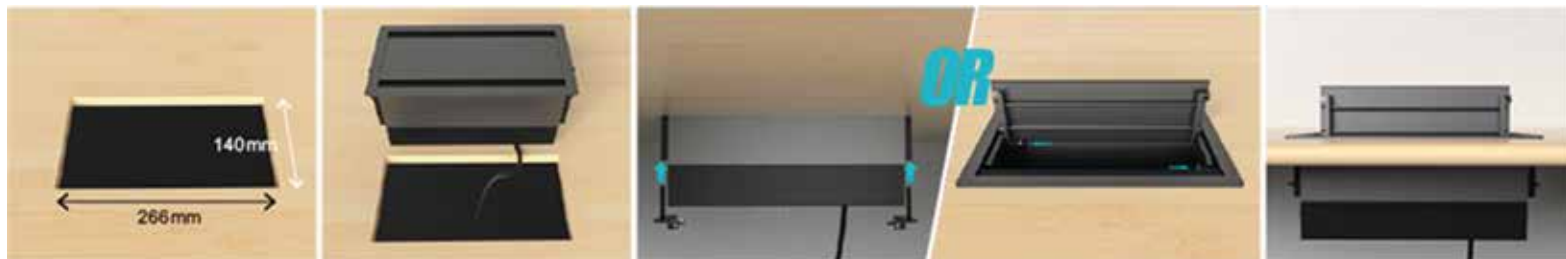
# STS-7-6F

## Recessed Double-Sided Flip-up Desk Outlet

### DIMENSIONS :



### INSTALLATION STEPS :



Make a rectangular cutout on your desk or table surface.

Feed power cord through the cutout until the full length of cable has passed through. Mount the unit into the cutout and be sure it is fully leveled onto the surface.

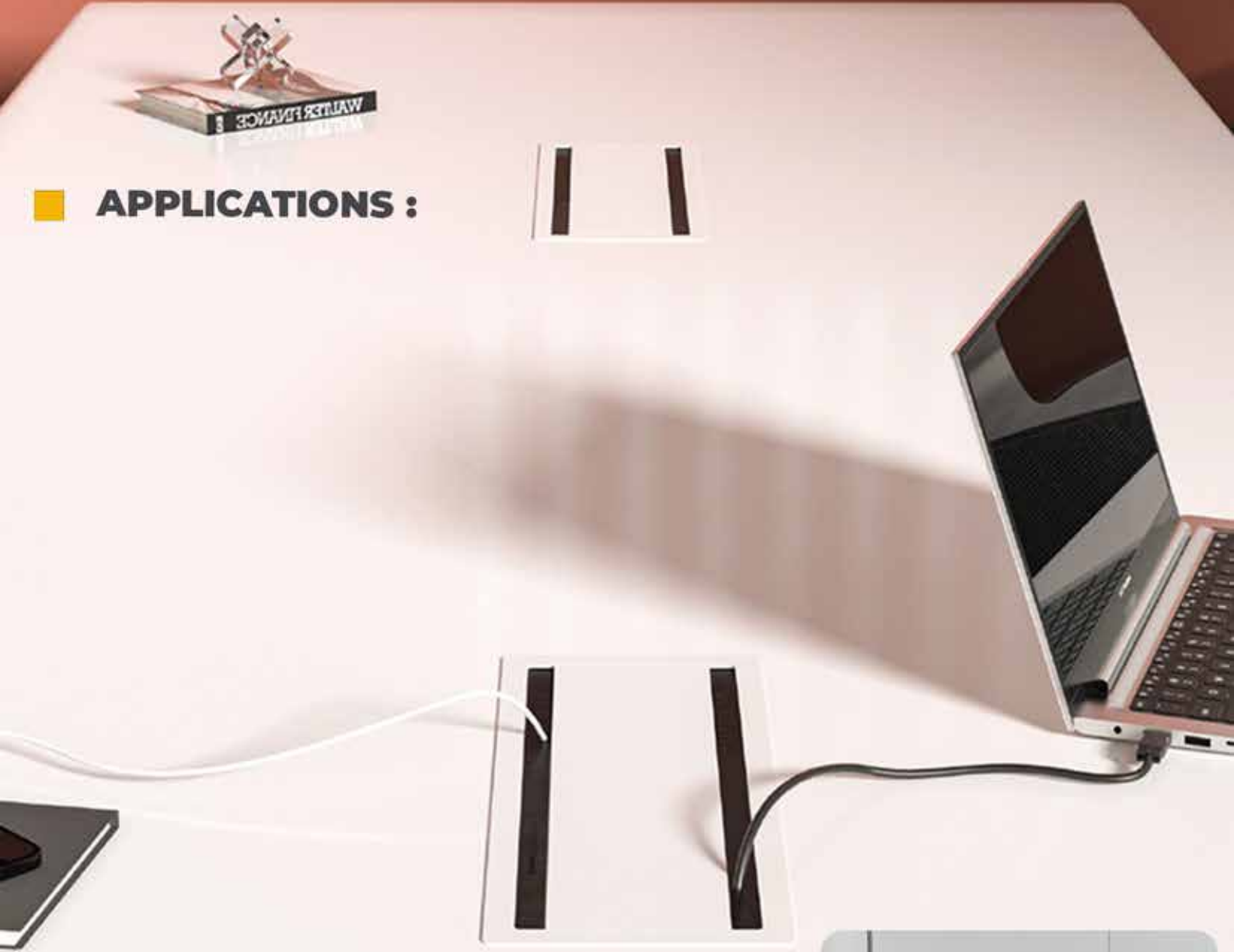
When in place, screw the four screws into the mounting bracket until they are positioned against the underside of the desktop and the unit is secured to the desk.

Open the top cover of the product. Fix the product to the table by screwing in the self-tapping screws on both sides.

plug in the power cord into an applicable power outlet and the unit is ready to use.

**STS-7-4F**

**Recessed Double-Sided Flip-up Desk Outlet**



**■ APPLICATIONS :**

**More information call us**

[WWW.DOUBLE-A.NET](http://WWW.DOUBLE-A.NET)

[MUSTAFA@DOUBLE-A.NET](mailto:MUSTAFA@DOUBLE-A.NET)

[INFO@DOUBLE-A.NET](mailto:INFO@DOUBLE-A.NET)

 +966 552394290

 +966 503151387

